



MONARCH ENGINEERING
& SERVICES CO.

Monarch Engineering & Services Co

PRECISION, PERFORMANCE, RELIABILITY

COMPANY OVERVIEW

Monarch Engineering & Services Co. is a leading multi-disciplinary engineering, construction, Vendor & Project inspections and industrial services company based in the Kingdom of Saudi Arabia. We deliver comprehensive solutions across construction, fabrication, inspections, HVAC, electrical, manpower supply, heavy equipment, transport, and building renovation sectors.

Our team of highly qualified engineers, technicians and skilled workers is committed to exceeding client expectations on every project, combining technical excellence, safety, and on time delivery to support the Kingdom's industrial growth.

VISION

To become a trusted leader in the Kingdom by driving innovation, maintaining high standards, and consistently delivering reliable solutions

MISSION

To deliver excellence across industrial and construction projects through complete solutions, strong technical support, and dependable project leadership

CORE VALUES

Excellence

Delivering high-quality results beyond expectations.

Integrity

Acting with honesty, ethics, and accountability.

Safety

Ensuring a safe and healthy work environment.

Innovation

Driving smart and modern engineering solutions.

Client Focus

Prioritizing client needs and satisfaction.

Teamwork

Collaborating to achieve shared success.



OUR SERVICES RANGE

At MONARCH ENGINEERING & Services CO., we deliver a comprehensive portfolio of industrial, engineering, and construction solutions designed to support complex projects across the Kingdom. Our capabilities cover:

1. Vendor & Project Inspections
2. Steel Fabrication & Modular Solutions
3. Fire Fighting Systems
4. HVAC
5. Civil Works & Infrastructure
6. Commercial Solar Power Plants
7. Electrical, Instrumentation & Telecommunication Services
8. Transport & Heavy Equipment
9. Trading Division
10. Manpower & Project Support

1. Vendor & Project Inspections

- Vendor and project inspection services for construction, industrial, oil & gas, and infrastructure projects
- Second and Third-Party inspection and assessment services
- Welding inspection, NDT coordination, and QA/QC supervision
- Material verification, dimensional inspection, and documentation review
- Hydrostatic, pneumatic, and performance test witnessing
- Inspection, testing, auditing, and compliance verification services
- Calibration coordination and certification support services
- Services performed in accordance with ASME, API, AWS, ISO, and Saudi Aramco standards



2. Steel Fabrication & Modular Solutions

- Fabrication and installation of carbon steel, stainless steel & alloy piping systems
- Spooling, welding, hydro-testing, NDT and QA/QC documentation
- Fabrication and erection of structural steel frames, platforms & supports
- Fabrication and installation of above ground & underground storage tanks
- Tank repair, modification, calibration and API-compliant testing
- Fabrication of modular process skids, metering skids, chemical injection skids & pump skids
- Modular package assembly with piping, instrumentation, electrical and controls
- Surface preparation, blasting, painting, coating & insulation of steel components
- Shutdown, turnaround and maintenance support for industrial and oil & gas facilities





3. Fire Fighting Systems

- Supply, installation, testing & commissioning fire protection systems
- Installation of sprinkler networks, standpipes, hydrants & hose cabinets
- Fire pump system installation (electric, diesel & jockey pumps)
- Installation of fire protection valves: OS&Y, zone control, alarm check valves
- FM-200 & clean agent fire suppression systems
- Fire extinguishers supply, placement & maintenance
- Fire safety system inspection, maintenance & compliance support

4. HVAC

Supply, and installation of HVAC systems (Chilled Water & DX) Installation of AHUs, FCUs, VRF/VRV, Exhaust & Fresh Air Fans Duct fabrication, installation, and insulation (GI, PI, Black Steel) HVAC equipment installation: **Chillers, pumps, cooling towers, heat exchangers.**

Chilled water piping installation, testing, and commissioning Installation of air outlets, louvers, dampers, and plenum boxes Testing, balancing, and commissioning of HVAC systems HVAC system maintenance, troubleshooting, and upgrades



5. Civil Works & Infrastructure

Monarch executes civil construction projects from ground breaking to handover. Our scope includes site preparation, RCC framing, foundations, drainage systems, road paving, and finishing works. We handle residential, commercial, and industrial civil packages with skilled manpower and strict quality control.

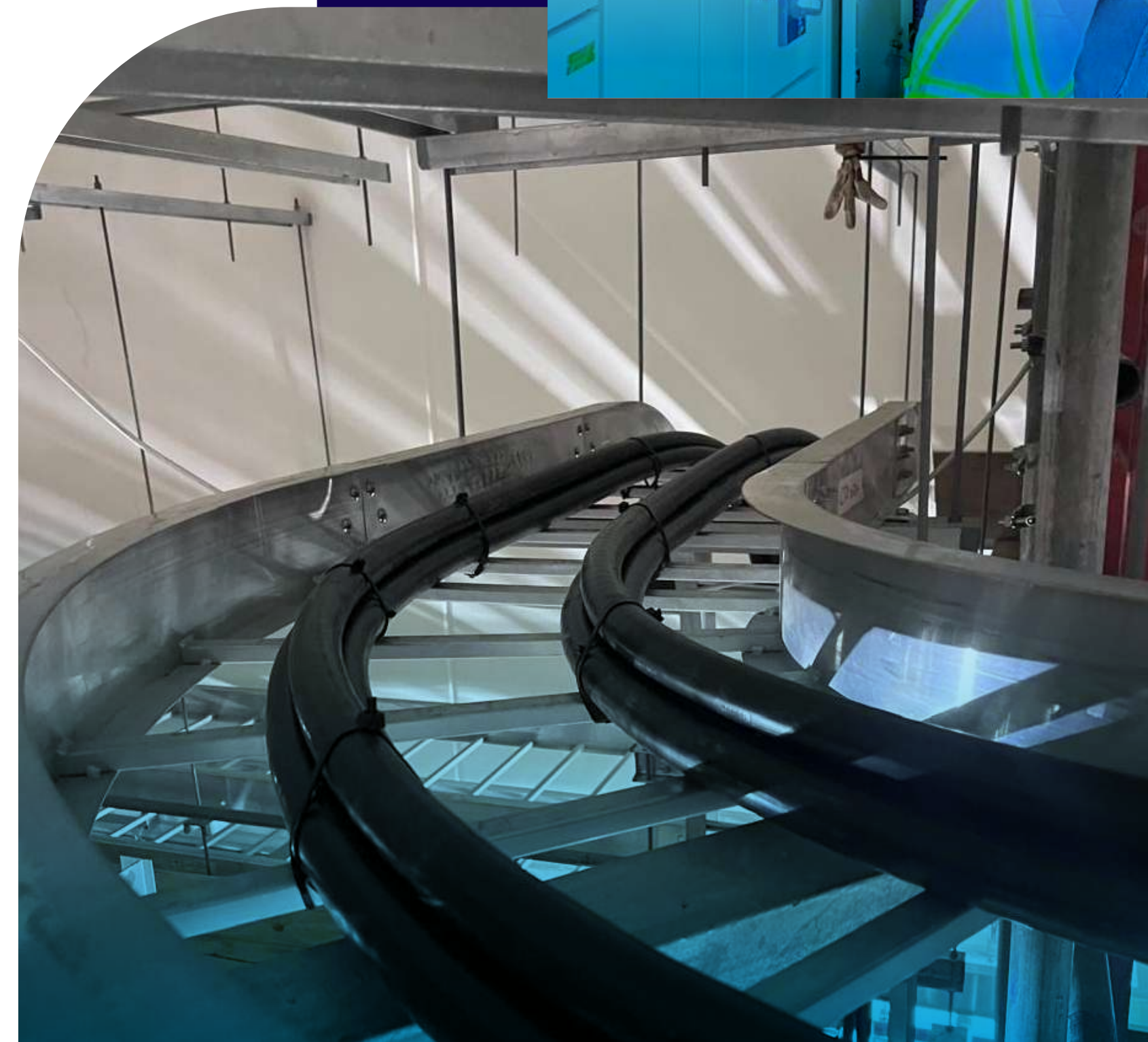


6. Commercial Solar Power Plants

- Comprehensive site assessment and energy demand study
- Supply and installation of PV modules, inverters, and mounting structures
- HT/LT electrical integration with existing industrial networks
- SCADA monitoring and control system installation
- Battery storage option for peak-load management
- Operation, maintenance, and performance monitoring

7 Electrical, Instrumentation & Telecommunication Services

- Electrical system installation, testing, and commissioning
- Cable laying, termination, panels, and control systems
- Instrument installation, calibration, and loop checking
- SCADA, PLC, and automation support
- Structured cabling and network infrastructure
- Fiber optic installation, splicing, and testing
- Communication system setup for industrial facilities



8. Transport & Heavy Equipment

Monarch, offer a diverse, well-maintained fleet of rental equipment, from excavators, cranes, and loaders to essential tools, regularly serviced and ready for deployment across Saudi Arabia for construction and industrial projects.



- | Lifting Equipment | Earth Moving Equipment | Power & Portable Machinery | Transportation |
|--|---|--|---|
| <ul style="list-style-type: none"> • Hydraulic Crane • Crawler Crane • Boom Truck • Forklift • Articulated Manlift • Telescopic Manlift • Mobile Crane • Tower Crane | <ul style="list-style-type: none"> • Bulldozer • Grader • Wheel Loaders • Excavator • Rock Breaker • Dump Truck • Back Hoe • Roller Compactor | <ul style="list-style-type: none"> • Air Compressor • Tower Lights • Welding Machine • Power Generator | <ul style="list-style-type: none"> • Flat Bed Trailer • Hydraulic Low Bed Trailer • 55 Seated Bus • 33 Seated Coaster • 15 Seated Hi Ace • Pick Up, SUV's & Sedan |

9. Trading Division

Monarch supply high-quality, international-standard products including electro-mechanical items, power and hand tools, safety products, Welding consumables, UPVC, CPVC and PVC pipes and fittings, hardware, M.I./G.I./S.S. pipe fittings and all types of building materials. Our strong sourcing capability and commitment to customer satisfaction have built our solid reputation in the Middle East, serving both utility and private sector needs.



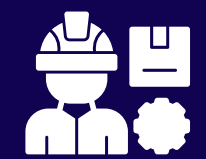
10. Manpower & Project Support

Monarch provides technical and non-technical manpower for construction, oil, gas, and shutdown maintenance, offering long-term, short-term, and emergency staffing across all skill levels, from management to labors.



Managers

Construction, Quality control, Safety, Engineering



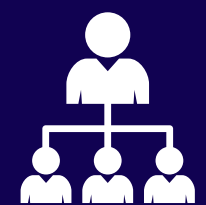
QC Supervisors & Inspectors

Electrical, Mechanical, Civil, Piping, Painting, Welding, E & I, Telecom, HVAC, Plumbing, RTR.



Engineers

Planning, Electrical, Mechanical, Civil, E&I, Telecom, IT, HVAC, Safety.



Supervisor

Safety, Work Permit Receiver, Construction, Fabrication, Scaffolding



Administration

Document Controller, Office Staff, Drivers, Material Controllers, Accountant, Cost Controller.



Skilled & Semiskilled Manpower

Fabricator, Fitters, welders, coating Applicator, Riggers



Technicians

Electrical, Mechanical, Civil, E & I, Millwright



KEY STRENGTHS

Skilled and certified workforce delivering quality-driven results with strong QA/QC and zero-harm HSE practices. Multidisciplinary expertise ensures reliable, on-time execution, supported by modern resources, rapid mobilization, and a strong client-focused approach.

WHY CHOOSE US

Trusted Partner for industrial and construction projects across the Kingdom.

- End-to-End Solutions
- From manpower supply to full project execution.
- Compliance with Standards
Familiar with ARAMCO and international requirements.
- Timely Delivery without compromising quality or safety.
- Cost-Effective Solutions tailored to client budgets.
- Strong Project Support with responsive communication and coordination.
- Commitment to Excellence in every phase of the project lifecycle.



COMMITMENT TO HEALTH, SAFETY & ENVIRONMENT (HSE)

At Monarch Engineering & Services Co., safety, health, and environmental responsibility are our top priorities. We commit to zero accidents, full compliance with regulations and standards, proactive risk management, and continuous improvement. Every employee is empowered to work safely, protect the environment, and deliver projects responsibly.

Our goal is zero accidents, zero damage, and zero downtime.

QUALITY ASSURANCE & CONTROL

At Monarch Engineering & Services Co., we uphold the highest standards of quality through strict QA/QC systems and international compliance. Every project is executed with precision, reliability, and accountability, supported by skilled personnel, systematic inspections, and continuous improvement, ensuring client trust and excellence in every deliverable.

Quality is not just a requirement – it is our culture.

PROJECT EXECUTION APPROACH

We follow a streamlined methodology:

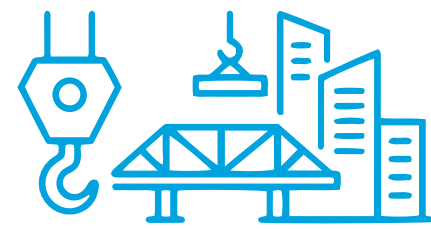
1. Client Requirement Analysis
2. Site Assessment & Technical Evaluation
3. Resource Planning & Mobilization
4. HSE Planning & Risk Control
5. Equipment Deployment & Operation
6. Monitoring & Progress Control
7. Completion, Reporting & Handover

This method ensures timely, safe, and cost-effective project execution.

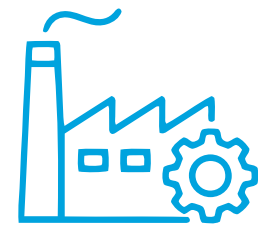
INDUSTRIES WE SERVE



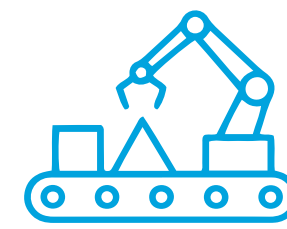
Oil & Gas



Construction &
Infrastructure



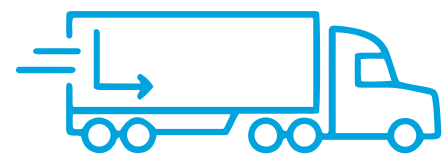
Industrial Plants
& Factories



Manufacturing
Facilities



Warehouses



Logistics
Centers



Commercial
Projects



Residential
Developments



Government &
Municipal Projects





MONARCH ENGINEERING
& SERVICES CO.

Contact

A: Unit No. 14, Building No. 8053, Prince Nawaf Ibn Abdul Aziz Street,
Al Khobar Shamaliyah District, Al Khobar 34426

P: +966 50 9486174

E: info@monarchengineerings.com

W: www.monarchengineerings.com